

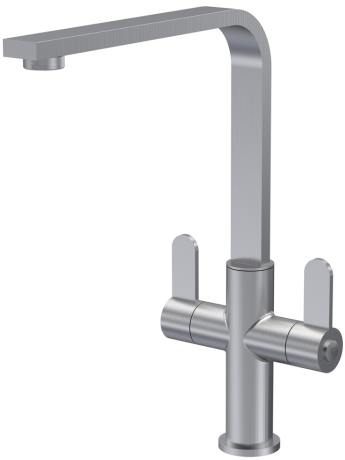
Technical Datasheet

Product Code: **KCH605DL**

Product Description: **Churni Mono Dual Lever Brushed Nickel**

Specification

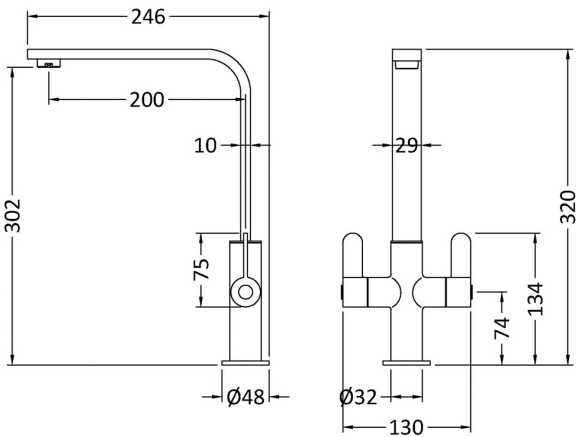
Product Guarantee:	3 Years
Barcode:	5056678400593
Material:	Brass & Plastic
Handle Type:	Lever
Min Operating Pressure:	0.5 Bar
Waste Included:	No
Number Of Tap Holes:	1
Flow Rate 0.1 Bar (L/min):	2.7
Flow Rate 0.5 Bar (L/min):	4.8
Flow Rate 1 Bar (L/min):	6.5
Flow Rate 2 Bar (L/min):	9
Flow Rate 3 Bar (L/min):	10.9
Colour:	Brushed Nickel



Key Features

- A high-end finishing touch to any kitchen
- Sleek minimalistic lever design
- High quality brass internals with luxury brushed nickel finish
- Waste not included
- Various finishes available

Technical Drawing



Dimensions: All measurements are in millimetres and are subject to normal manufacturing variations.

Due to a continuing development programme to improve design and performance, we reserve all rights to vary specifications without prior notice. Please note, all accessories are for photographic purposes only.