

Technical Datasheet

Product Code: **BET690001**

Product Description: **I/Std T690001 Tempo Arc Toilet Seat SC**

Specification

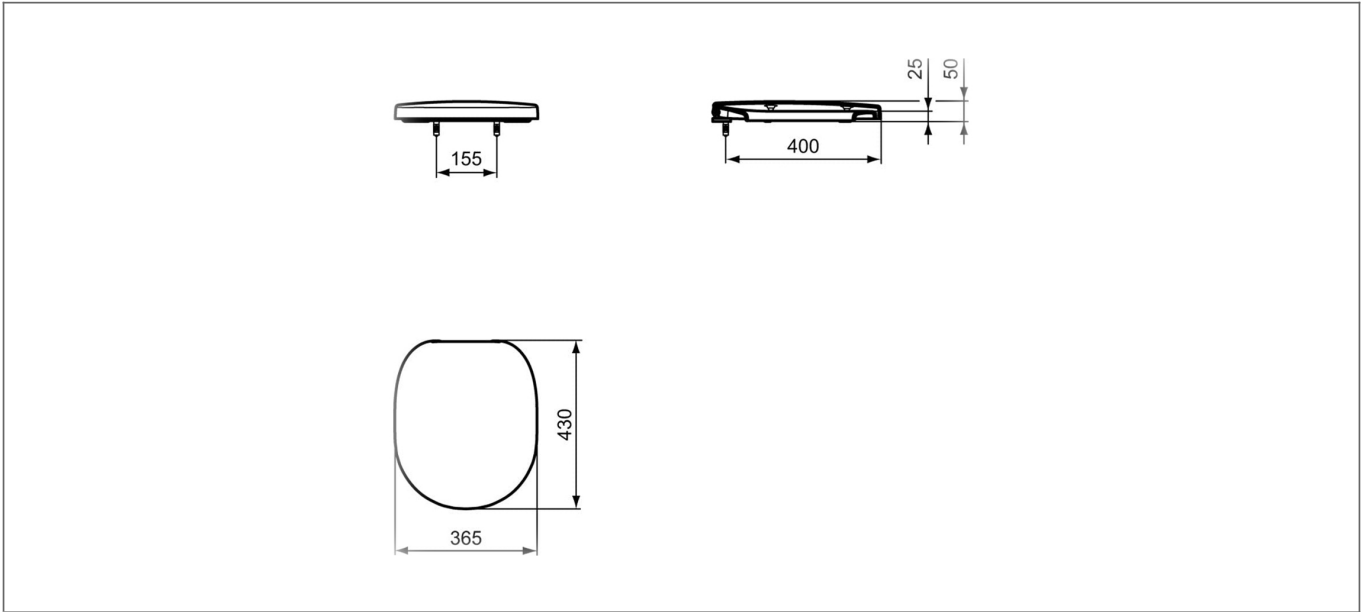
Material:	Duroplast
Shape:	Round
Seat Type:	Soft Close
Product Guarantee:	5 Years
Barcode:	5017830480426
Packaged Weight (kg):	2.4 kg



Key Features

- Wide-ranging bathroom furniture collection with modern expressive design
- Manufactured from high quality white duroplast
- Soft close seat for minimal noise & added safety measure
- Compatible for use with Tempo pan range

Technical Drawing



Dimensions: All measurements are in millimetres and are subject to normal manufacturing variations.

Due to a continuing development programme to improve design and performance, we reserve all rights to vary specifications without prior notice. Please note, all accessories are for photographic purposes only.