

# Technical Datasheet

Product Code: 238CDOCMAMBBL-R



Product Description: ARLEY CDM24 Comfort Rimless CC Ambulant Doc M PB

## Specification

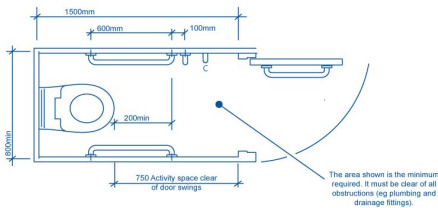
Material:	Ceramic
Style:	Modern
Range Name:	Comfort
Shape:	Round
Colour:	White
Barcode:	5056474524172
Packaged Weight (kg):	43 kg
Packaged Length (Metre):	0.935
Packaged Width (Metre):	0.08
Packaged Height (Metre):	0.5



## Key Features

- Rimless technology for a cleaner & more hygienic flush
- Manufactured from high quality white ceramic
- Ideal design for people with low mobility
- Includes push button cistern with fittings
- Complete with x4 grab rails & economy blue ring seat

## Technical Drawing



Dimensions: All measurements are in millimetres and are subject to normal manufacturing variations.

Due to a continuing development programme to improve design and performance, we reserve all rights to vary specifications without prior notice. Please note, all accessories are for photographic purposes only.