

Technical Datasheet

Product Code: **ARL-CYCWHF1000**

Product Description: **CYCLONE 1.0 - 1.3m WC Frame cw Cistern & Plate**



Specification

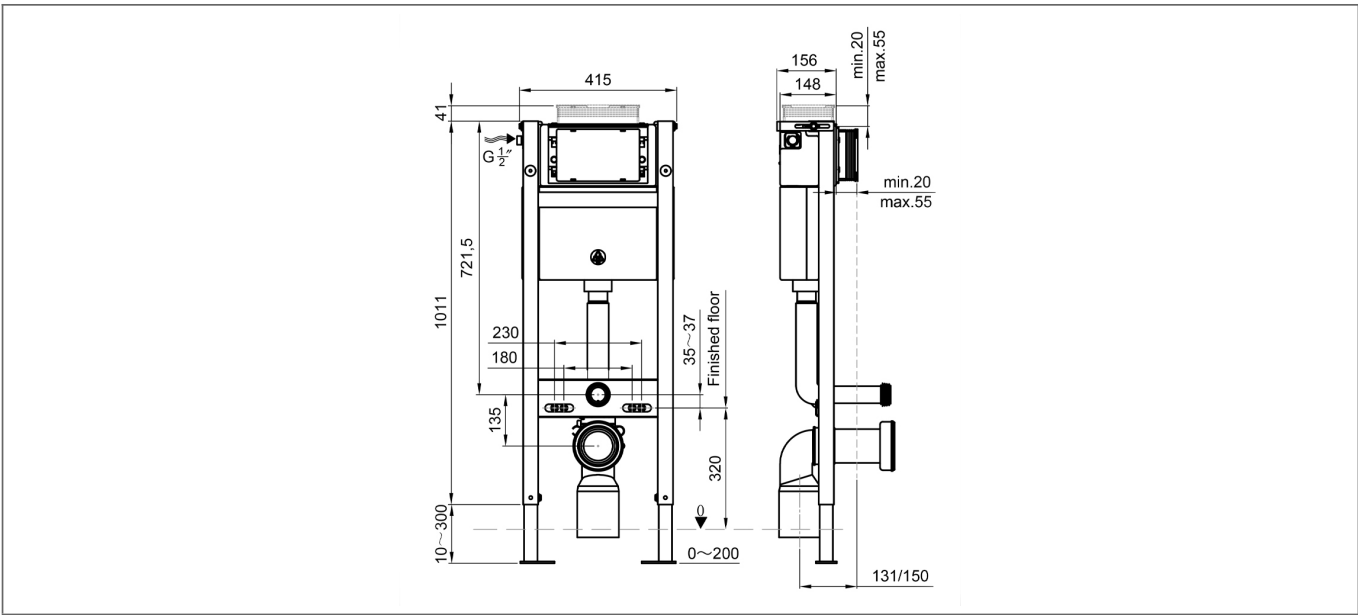
Style:	Modern
Range Name:	Cyclone
Packaged Weight (kg):	16.5 kg
Packaged Length (Metre):	1.15
Packaged Width (Metre):	0.46
Packaged Height (Metre):	0.17



Key Features

None Specified.

Technical Drawing



Dimensions: All measurements are in millimetres and are subject to normal manufacturing variations.

Due to a continuing development programme to improve design and performance, we reserve all rights to vary specifications without prior notice. Please note, all accessories are for photographic purposes only.