

Technical Datasheet

Product Code: **0123877220A**

Product Description: **Grohe 3877220A Rapid SL Cosmo 1.13m (3in1 Set)**

Specification

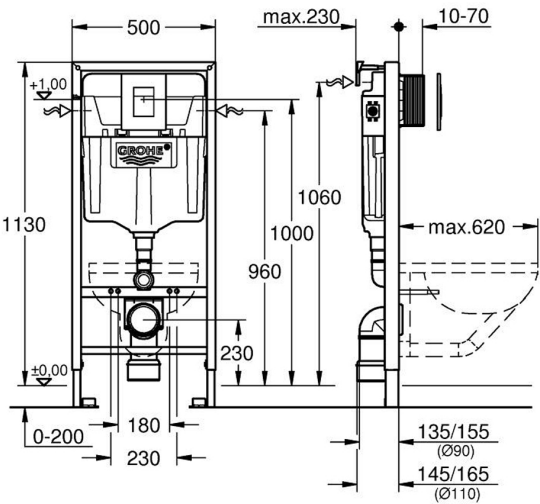
Range Name:	Rapid SL
Packaged Weight (kg):	13.32 kg
Packaged Length (Metre):	1.11
Packaged Width (Metre):	0.525
Packaged Height (Metre):	0.155



Key Features

- Dual flush system allows you to select a flush volume of 3 or 5L
- ½" water supply connection including integrated angle valve & push fit flexible hose union
- With flushing cistern GD 2 , 6 l - 9 l
- Complete with Skate Cosmo (38 732 000) flush plate & front wall brackets (38 558 00M)
- WRAS approved filling valve included

Technical Drawing



Dimensions: All measurements are in millimetres and are subject to normal manufacturing variations.

Due to a continuing development programme to improve design and performance, we reserve all rights to vary specifications without prior notice. Please note, all accessories are for photographic purposes only.