

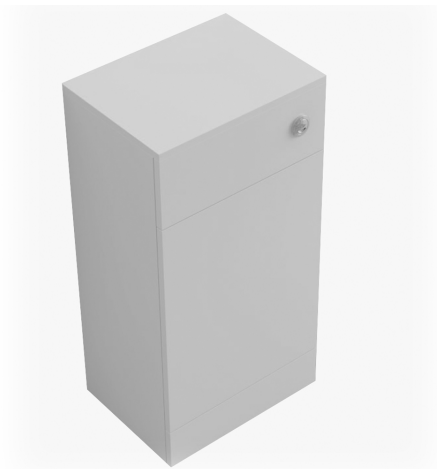
Technical Datasheet

Product Code: **237HFTWC-W**

Product Description: **Halite White WC Unit**

Specification

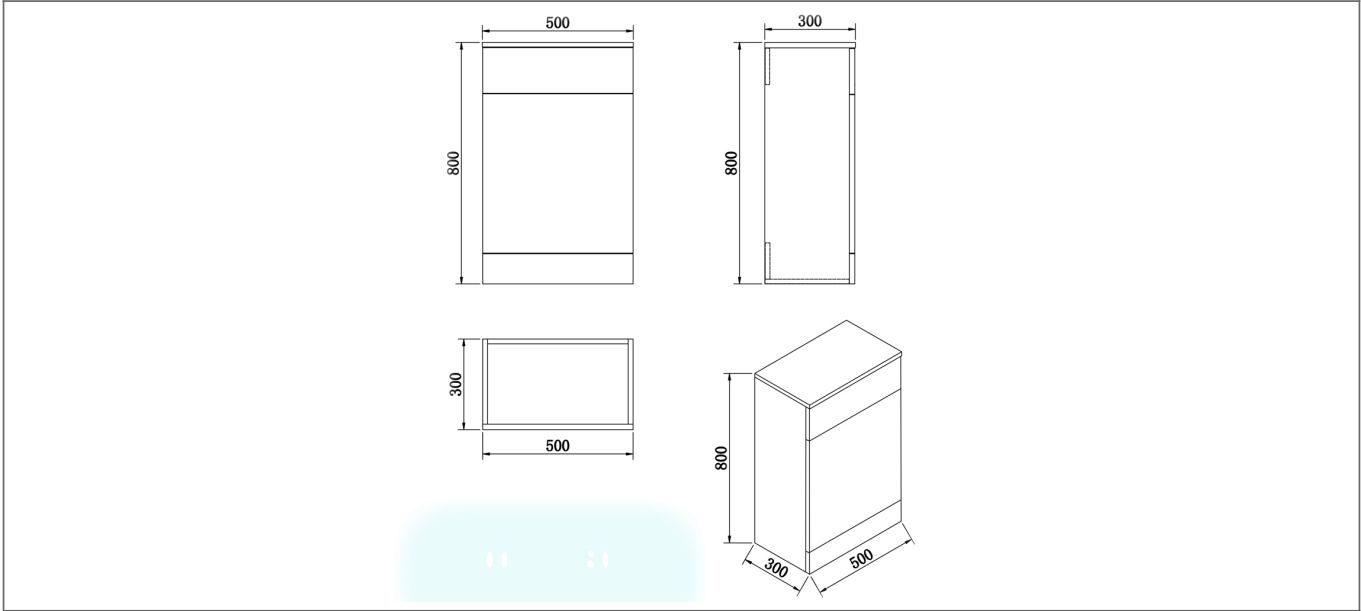
Handle Type:	Push Button
Material:	Foamed PVC
Style:	Modern
Product Guarantee:	Lifetime
Packaged Weight:	7.5 kg
Packaged Length (Metre):	0.56
Packaged Width (Metre):	0.36
Packaged Height (Metre):	0.86



Key Features

- Halite is made with a combination of PVC & polyurea
- Halite is 100% water resistant
- Halite is completely formaldehyde free and is recyclable which means it is more eco-friendly
- The lifespan of Halite products is considerably more than that of MDF products
- Matching furniture is also available from Halite

Technical Drawing



Dimensions: All measurements are in millimetres and are subject to normal manufacturing variations.

Due to a continuing development programme to improve design and performance, we reserve all rights to vary specifications without prior notice. Please note, all accessories are for photographic purposes only.